



polk®

RESERVE SERIES

POLK. EXPECT GREAT SOUND®



polk®

**RESERVE
SERIES**

**R100
R200
R300
R350
R400
R500
R600
R700
R900**

polk

TECH-FORWARD DESIGN



PINNACLE TWEETER

We call it the Pinnacle for a reason, since it took us 40 years to get here. But this is the reason our speakers are able to provide pinpoint accuracy in sound reproduction.



TURBINE CONE

We developed the Turbine Cone to only be used in our flagship speakers. We used our proprietary technology to create the best cone that we have ever used. Delivering a smooth, detailed mid-range.



PATENT PENDING X-PORT

The Polk X-Port is a set of closed-pipe absorbers that are tuned to the internal frequency of the cabinet. This cancels out traditional resonances and distortions that you may get in the speaker's construction.



POWER PORT 2.0

The latest version of our successful Power Port Technology combines a carefully engineered port design with the new patent pending X-Port. With these combined, you get smooth, effortless, distortion free bass without any chuffing.



DESIGN

That's all great, but how do they look? Beautiful. Of course. We wrapped years of research into this sleek shell. Elegant. Clean.

All that and they look unbelievably sexy. Modern and sleek, they are the perfect combination of design and technology. On the wall or free standing, the Reserve Series ups the look of your system as much as they up your sound.

ARE YOU READY TO HEAR WHAT BETTER SOUNDS LIKE?

R500 COMPACT FLOORSTANDING SPEAKERS

SLIM AND POWERFUL, FITS INTO ANY DÉCOR.

Polk Patented X-Port: closed-pipe absorbers that are specifically **tuned to catch and eliminate traditional speaker distortions.**

| | |
|---|--|
| Hi-Res Audio IMAX ENHANCED | |
| TRANSDUCER | |
| TWEETER | 1" Ring Radiator |
| MID-RANGE/MID-BASS | 5 1/4" Turbine Cone |
| WOOFERS | — |
| OVERALL FREQUENCY RESPONSE | 32Hz - 50kHz |
| FREQUENCY RESPONSE (-30dB LIMITS) | 49Hz - 36kHz |
| RECOMMENDED AMPLIFIER POWER | |
| AMPLIFIER OUTPUT COMPATIBILITY | 8Ω/ 6Ω/ 4Ω |
| MINIMUM IMPEDANCE | 3.9Ω |
| SENSITIVITY (2.83V/1M) | 87dB |
| CROSSOVER FREQUENCY | |
| TWEETER/MID-RANGE | 2500Hz |
| MID-RANGE/MID-BASS | — |
| MEASUREMENTS | |
| PRODUCT DIMS W X H X D (INCLUDES WIDTH OF FEET) | 255.4 x 1044.5 x 348.8mm |
| PRODUCT WEIGHTS (EACH) | 17.7 kg |
| SHIPPING WEIGHT | 22.5 kg |
| CABINETRY | |
| MID-RANGE ENCLOSURE TYPE | — |
| MID-BASS / WOOFER ENCLOSURE TYPE | Patent Pending X-Port |
| AVAILABLE FINISHES | |
| Midnight Black | |
| FEET | |
| BINDING POSTS | Spike and Pad Single nickel-plated 5-way binding posts |
| ACCESSORIES | |
| DESIGNED FOR R900 HEIGHT SPEAKER | Yes |



R600 FLOORSTANDING SPEAKERS

BEAUTY, VALUE, AND EXCEPTIONAL BASS.

Anti-diffraction Magnetic Grilles: Acoustically inert grilles **offer a clean aesthetic without sacrificing sound.**

| | |
|---|--|
| Hi-Res Audio IMAX ENHANCED | |
| TRANSDUCER | |
| TWEETER | 1" Ring Radiator |
| MID-RANGE/MID-BASS | 6 1/2" Turbine Cone |
| WOOFERS | — |
| OVERALL FREQUENCY RESPONSE | 30Hz - 50kHz |
| FREQUENCY RESPONSE (-30dB LIMITS) | 38Hz - 38kHz |
| RECOMMENDED AMPLIFIER POWER | |
| AMPLIFIER OUTPUT COMPATIBILITY | 8Ω/ 6Ω/ 4Ω |
| MINIMUM IMPEDANCE | 4.0Ω |
| SENSITIVITY (2.83V/1M) | 87.5dB SPL |
| CROSSOVER FREQUENCY | |
| TWEETER/MID-RANGE | 2700Hz |
| MID-RANGE/MID-BASS | — |
| MEASUREMENTS | |
| PRODUCT DIMS W X H X D (INCLUDES WIDTH OF FEET) | 280.7 x 1063.8 x 381.6mm |
| PRODUCT WEIGHTS (EACH) | 21.5 kg |
| SHIPPING WEIGHT | 26.4 kg |
| CABINETRY | |
| MID-RANGE ENCLOSURE TYPE | — |
| MID-BASS / WOOFER ENCLOSURE TYPE | Floor Firing Power Port with ETF |
| AVAILABLE FINISHES | |
| Midnight Black | |
| FEET | |
| BINDING POSTS | Spike and Pad Single nickel-plated 5-way binding posts |
| ACCESSORIES | |
| DESIGNED FOR R900 HEIGHT SPEAKER | Yes |



R700 FLOORSTANDING SPEAKERS

FLAGSHIP-QUALITY SOUND, ELEGANT AND REFINED LOOKS, TRUE VALUE.

Pinnacle Tweeter: The new ring radiator tweeter design dramatically improves dispersion while **delivering clear, crisp, and natural highs.**

| | |
|---|--|
| Hi-Res Audio IMAX ENHANCED | |
| TRANSDUCER | |
| TWEETER | 1" Ring Radiator |
| MID-RANGE/MID-BASS | 6 1/2" Turbine Cone |
| WOOFERS | Two 8" Woofers |
| OVERALL FREQUENCY RESPONSE | 30Hz - 50kHz |
| FREQUENCY RESPONSE (-30dB LIMIT) | 38Hz - 37kHz |
| RECOMMENDED AMPLIFIER POWER | 20 - 300W |
| AMPLIFIER OUTPUT COMPATIBILITY | 8Ω/ 6Ω/ 4Ω |
| MINIMUM IMPEDANCE | 3.6 Ω |
| SENSITIVITY (2.83V/1M) | 88dB SPL |
| CROSSOVER FREQUENCY | |
| TWEETER/MID-RANGE | 2700Hz |
| MID-RANGE/MID-BASS | 350Hz |
| MEASUREMENTS | |
| PRODUCT DIMS W X H X D (INCLUDES WIDTH OF FEET) | 320.7 x 1143.8 x 428.3mm |
| PRODUCT WEIGHTS (EACH) | 35.9 kg |
| SHIPPING WEIGHT | 42.8 kg |
| CABINETRY | |
| MID-RANGE ENCLOSURE TYPE | Sealed |
| MID-BASS / WOOFER ENCLOSURE TYPE | Floor Firing Power Port with ETF |
| AVAILABLE FINISHES | Midnight Black |
| FEET | |
| BINDING POSTS | Spike and Pad Dual nickel-plated 5-way binding posts |
| ACCESSORIES | |
| DESIGNED FOR R900 HEIGHT SPEAK | Yes |



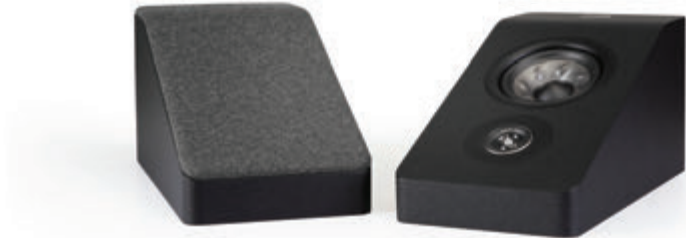
IMAX
ENHANCED

R900 HEIGHT MODULE (PAIR)

EASILY ADD NEXT GENERATION, 3D SOUND TO YOUR HOME THEATRE.

Flexible Placement: The R900 can be wall mounted or placed on top of any compatible Reserve speaker.

| | |
|---|---|
| Hi-Res Audio IMAX ENHANCED | |
| TRANSDUCER | |
| TWEETER | 0.75" Ring Radiator |
| MID-RANGE/MID-BASS | 4" Turbine Cone Midbasses |
| WOOFERS | — |
| OVERALL FREQUENCY RESPONSE | 50Hz - 50kHz (when wall mounted) |
| FREQUENCY RESPONSE (-30dB LIMITS) | 70 - 32kHz (when wall mounted) |
| RECOMMENDED AMPLIFIER POWER | 45 - 100W |
| AMPLIFIER OUTPUT COMPATIBILITY | 8Ω / 6Ω/ 4Ω |
| MINIMUM IMPEDANCE | 4.2Ω |
| SENSITIVITY (2.83V/1M) | 85.5dB SPL (when wall mounted) |
| CROSSOVER FREQUENCY | |
| TWEETER/MID-RANGE | 2100Hz |
| MID-RANGE/MID-BASS | — |
| MEASUREMENTS | |
| PRODUCT DIMS W X H X D (INCLUDES WIDTH OF FEET) | 166 x 158.3 x 320mm |
| PRODUCT WEIGHTS (EACH) | 3 kg |
| SHIPPING WEIGHT | 7.3 kg |
| CABINETRY | |
| MID-RANGE ENCLOSURE TYPE | — |
| MID-BASS / WOOFER ENCLOSURE TYPE | Sealed |
| AVAILABLE FINISHES | Midnight Black |
| FEET | |
| BINDING POSTS | Wall Mountable Single nickel-plated 5-way binding posts |
| ACCESSORIES | |
| DESIGNED FOR R900 HEIGHT SPEAKER | N/A |



R100 COMPACT BOOKSHELF

AMAZING SOUND AND TRUE VALUE IN A COMPACT DESIGN.

Turbine Cone: **Delivers smooth and incredibly detailed mid-range imaging.**

| | |
|---|--|
| Hi-Res AudioIMAX ENHANCED | |
| TRANSDUCER | |
| TWEETER | 1" Ring Radiator |
| MID-RANGE/MID-BASS | 5 ¼" Turbine Cone |
| WOOFERS | — |
| OVERALL FREQUENCY RESPONSE | 44Hz - 50kHz |
| FREQUENCY RESPONSE (-30B LIMITS) | 58Hz - 39kHz |
| RECOMMENDED AMPLIFIER POWER | |
| AMPLIFIER OUTPUT COMPATIBILITY | 8Ω/ 6Ω / 4Ω |
| MINIMUM IMPEDANCE | 3.6Ω |
| SENSITIVITY (2.83V/1M) | 86dB |
| CROSSOVER FREQUENCY | |
| TWEETER/MID-RANGE | 2700Hz |
| MID-RANGE/MID-BASS | — |
| MEASUREMENTS | |
| PRODUCT DIMS W X H X D (INCLUDES WIDTH OF FEET) | 166 x 324 x 259.5mm |
| PRODUCT WEIGHTS (EACH) | 5.5 kg |
| SHIPPING WEIGHT | 12.9 kg |
| CABINETRY | |
| MID-RANGE ENCLOSURE TYPE | — |
| MID-BASS / WOOFER ENCLOSURE TYPE | Patent Pending X-Port |
| AVAILABLE FINISHES | |
| Midnight Black | |
| FEET | |
| BINDING POSTS | Rubber pads Single nickle-plated 5-way binding posts |
| ACCESSORIES | |
| DESIGNED FOR R900 HEIGHT SPEAKER | No |



R200 BOOKSHELF SPEAKERS

EXCEPTIONAL SOUND AND ELEGANT DESIGN AT AN INCREDIBLE PRICE.

Premium, Large 5-Way Binding Posts: Perfect for easy set up and to ensure the **most direct, efficient, and loss-less connection possible.**


| | |
|---|--|
| Hi-Res AudioIMAX ENHANCED | |
| TRANSDUCER | |
| TWEETER | 1" Ring Radiator |
| MID-RANGE/MID-BASS | 6 ½" Turbine Cone |
| WOOFERS | — |
| OVERALL FREQUENCY RESPONSE | 39Hz - 50kHz |
| FREQUENCY RESPONSE (-30B LIMITS) | 51Hz - 38kHz |
| RECOMMENDED AMPLIFIER POWER | |
| AMPLIFIER OUTPUT COMPATIBILITY | 8Ω/ 6Ω/ 4Ω |
| MINIMUM IMPEDANCE | 3.8Ω |
| SENSITIVITY (2.83V/1M) | 86dB |
| CROSSOVER FREQUENCY | |
| TWEETER/MID-RANGE | 3000Hz |
| MID-RANGE/MID-BASS | — |
| MEASUREMENTS | |
| PRODUCT DIMS W X H X D (INCLUDES WIDTH OF FEET) | 190 x 359 x 353.8mm |
| PRODUCT WEIGHTS (EACH) | 8.7 kg |
| SHIPPING WEIGHT | 19.7 kg |
| CABINETRY | |
| MID-RANGE ENCLOSURE TYPE | — |
| MID-BASS / WOOFER ENCLOSURE TYPE | Patent Pending X-Port |
| AVAILABLE FINISHES | |
| Midnight Black | |
| FEET | |
| BINDING POSTS | Rubber pads Single nickle-plated 5-way binding posts |
| ACCESSORIES | |
| DESIGNED FOR R900 HEIGHT SPEAKER | Yes |



R300 COMPACT CENTER CHANNEL SPEAKER

CRISP DIALOGUE TO YOUR HOME THEATRE CRISP DIALOGUE TO YOUR HOME THEATRE.

Fully Sealed Speaker Enclosure: Eliminates chuffing and distortion for **crisp, clear, easy to understand sound.**


| | |
|---|---|
| <div><div>Hi-Res Audio</div><div>IMAX ENHANCED</div></div> | |
| TRANSDUCER | |
| TWEETER | 1" Ring Radiator |
| MID-RANGE/MID-BASS | Two 5 1/4" Turbine Cone |
| WOOFERS | — |
| OVERALL FREQUENCY RESPONSE | 45Hz - 50kHz |
| FREQUENCY RESPONSE (-30dB LIMITS) | 65Hz - 38kHz |
| RECOMMENDED AMPLIFIER POWER | 30 - 200W |
| AMPLIFIER OUTPUT COMPATIBILITY | 8Ω/ 6Ω/ 4Ω |
| MINIMUM IMPEDANCE | 3.8Ω |
| SENSITIVITY (2.83V/1M) | 86.5dB |
| CROSSOVER FREQUENCY | |
| TWEETER/MID-RANGE | 2200Hz |
| MID-RANGE/MID-BASS | — |
| MEASUREMENTS | |
| PRODUCT DIMS W X H X D (INCLUDES WIDTH OF FEET) | 482.6 x 172 x 226.5mm |
| PRODUCT WEIGHTS (EACH) | 7.6 kg |
| SHIPPING WEIGHT | 9 kg |
| CABINETRY | |
| MID-RANGE ENCLOSURE TYPE | — |
| MID-BASS / WOOFER ENCLOSURE TYPE | Sealed |
| AVAILABLE FINISHES | Midnight Black |
| FEET | Rubber pads |
| BINDING POSTS | Single nickel-plated 5-way binding posts |
| ACCESSORIES | |
| DESIGNED FOR R900 HEIGHT SPEAKER | N/A |



R350 SLIM CENTER CHANNEL LCR

COMPACT DESIGN OFFERS CRISP DIALOGUE AND FLEXIBLE USE.

Versatile Placement: **Use the R350 as the left, center or right channel** in your home theater system; 4-way wall mounts let you mount the speaker horizontally or vertically to easily fit into your space.

| | |
|---|---|
| <div><div>Hi-Res Audio</div><div>IMAX ENHANCED</div></div> | |
| TRANSDUCER | |
| TWEETER | 1" Ring Radiator |
| MID-RANGE/MID-BASS | Four 4" Turbine Cone |
| WOOFERS | — |
| OVERALL FREQUENCY RESPONSE | 50Hz - 50kHz |
| FREQUENCY RESPONSE (-30dB LIMITS) | 75Hz - 35kHz |
| RECOMMENDED AMPLIFIER POWER | 25 - 200W |
| AMPLIFIER OUTPUT COMPATIBILITY | 8Ω/ 6Ω/ 4Ω |
| MINIMUM IMPEDANCE | 3.9Ω |
| SENSITIVITY (2.83V/1M) | 87dB |
| CROSSOVER FREQUENCY | |
| TWEETER/MID-RANGE | 2700Hz |
| MID-RANGE/MID-BASS | 1400Hz |
| MEASUREMENTS | |
| PRODUCT DIMS W X H X D (INCLUDES WIDTH OF FEET) | 762 x 141 x 187.5mm |
| PRODUCT WEIGHTS (EACH) | 9 kg |
| SHIPPING WEIGHT | 10.8 kg |
| CABINETRY | |
| MID-RANGE ENCLOSURE TYPE | — |
| MID-BASS / WOOFER ENCLOSURE TYPE | Sealed |
| AVAILABLE FINISHES | Midnight Black |
| FEET | Rubber pads |
| BINDING POSTS | Single nickel-plated 5-way binding posts |
| ACCESSORIES | |
| DESIGNED FOR R900 HEIGHT SPEAKER | N/A |



Turbine Cone Drivers



Pinnacle Tweeters



Turbine Cone Drivers



Pinnacle Tweeters

R400 CENTER CHANNEL SPEAKER

CRISP DIALOGUE AND DYNAMIC SOUND RIGHT IN YOUR LIVING ROOM.

Home Theatre Essential: The center channel speaker is the most important speaker in your home theater system, **delivering movie and TV dialogue with exceptional clarity.**

Hi-Res
Audio

IMAX ENHANCED

| | |
|--|--|
| TRANSDUCER | |
| TWEETER | 1" Ring Radiator |
| MID-RANGE/MID-BASS | Two 6 1/2" Turbine Cone |
| WOOFERS | — |
| OVERALL FREQUENCY RESPONSE | 36Hz - 50kHz |
| FREQUENCY RESPONSE (1 | 48Hz - 39kHz |
| RECOMMENDED AMPLIFIER POWER | 20 - 200W |
| AMPLIFIER OUTPUT COM1 | 8Ω / 6Ω / 4Ω |
| MINIMUM IMPEDANCE | 4.1Ω |
| SENSITIVITY (2.83V/1M) | 89dB |
| CROSSOVER FREQUENCY | |
| TWEETER/MID-RANGE | 2500Hz |
| MID-RANGE/MID-BASS | — |
| MEASUREMENTS | |
| PRODUCT DIMS W X H X D (INCLUDES WIDTH OF FEET) | 615 x 196.6 x 350mm |
| PRODUCT WEIGHTS (EACH) | 14.9 kg |
| SHIPPING WEIGHT | 17.9 kg |
| CABINETRY | |
| MID-RANGE ENCLOSURE* | — |
| MID-BASS / WOOFER ENCLOSURE TYPE | Patent Pending X-Port |
| AVAILABLE FINISHES | Midnight Black |
| FEET | |
| BINDING POSTS | Rubber pads Single nickel-plated 5-way binding posts |
| ACCESSORIES | |
| DESIGNED FOR R900 HEH | N/A |





polk
RESERVE SERIES
MODELS
 IMAX ENHANCED
 Hi-Res
 AUDIO

R100
 COMPACT BOOKSHELF



R200
 BOOKSHELF



R300
 CENTER CHANNEL



R350
 SLIM CENTER
 CHANNEL (LCR)



TRANSDUCER

| | | | | |
|---------|------------------|------------------|------------------|------------------|
| TWEETER | 1" Ring Radiator | 1" Ring Radiator | 1" Ring Radiator | 1" Ring Radiator |
|---------|------------------|------------------|------------------|------------------|

MID-RANGE/MID-BASS

| | | | |
|---------------------|---------------------|-------------------------|----------------------|
| 5 1/4" Turbine Cone | 6 1/2" Turbine Cone | Two 5 1/4" Turbine Cone | Four 4" Turbine Cone |
|---------------------|---------------------|-------------------------|----------------------|

WOOFERS

| | | | |
|---|---|---|---|
| — | — | — | — |
|---|---|---|---|

OVERALL FREQUENCY RESPONSE

| | | | |
|--------------|--------------|--------------|--------------|
| 44Hz - 50kHz | 39Hz - 50kHz | 45Hz - 50kHz | 50Hz - 50kHz |
|--------------|--------------|--------------|--------------|

FREQUENCY RESPONSE (-3DB LIMITS)

| | | | |
|--------------|--------------|--------------|--------------|
| 58Hz - 39kHz | 51Hz - 38kHz | 65Hz - 38kHz | 75Hz - 35kHz |
|--------------|--------------|--------------|--------------|

RECOMMENDED AMPLIFIER POWER

| | | | |
|-----------|-----------|-----------|-----------|
| 30 - 150W | 30 - 200W | 30 - 200W | 25 - 200W |
|-----------|-----------|-----------|-----------|

AMPLIFIER OUTPUT COMPATIBILITY

| | | | |
|------------|------------|------------|------------|
| 8Ω/ 6Ω/ 4Ω | 8Ω/ 6Ω/ 4Ω | 8Ω/ 6Ω/ 4Ω | 8Ω/ 6Ω/ 4Ω |
|------------|------------|------------|------------|

MINIMUM IMPEDANCE

| | | | |
|------|------|------|------|
| 3.6Ω | 3.8Ω | 3.8Ω | 3.9Ω |
|------|------|------|------|

SENSITIVITY (2.83V/1M)

| | | | |
|------|------|--------|------|
| 86dB | 86dB | 86.5dB | 87dB |
|------|------|--------|------|

CROSSOVER FREQUENCY

| | | | | |
|-------------------|--------|--------|--------|--------|
| TWEETER/MID-RANGE | 2700Hz | 3000Hz | 2200Hz | 2700Hz |
|-------------------|--------|--------|--------|--------|

MID-RANGE/MID-BASS

| | | | |
|---|---|---|--------|
| — | — | — | 1400Hz |
|---|---|---|--------|

MEASUREMENTS

| | | | | |
|--|---------------------|---------------------|-----------------------|---------------------|
| PRODUCT DIMS W X H X D (INCLUDES WIDTH OF FEET) | 166 x 324 x 259.5mm | 190 x 359 x 353.8mm | 482.6 x 172 x 226.5mm | 762 x 141 x 187.5mm |
|--|---------------------|---------------------|-----------------------|---------------------|

PRODUCT WEIGHTS (EACH)

| | | | |
|--------|--------|--------|------|
| 5.5 kg | 8.7 kg | 7.6 kg | 9 kg |
|--------|--------|--------|------|

SHIPPING WEIGHT

| | | | |
|---------|---------|------|---------|
| 12.9 kg | 19.7 kg | 9 kg | 10.8 kg |
|---------|---------|------|---------|

CABINETRY

| | | | | |
|--------------------------|---|---|---|---|
| MID-RANGE ENCLOSURE TYPE | — | — | — | — |
|--------------------------|---|---|---|---|

MID-BASS / WOOFER ENCLOSURE TYPE

| | | | |
|-----------------------|-----------------------|--------|--------|
| Patent Pending X-Port | Patent Pending X-Port | Sealed | Sealed |
|-----------------------|-----------------------|--------|--------|

AVAILABLE FINISHES

| | | | |
|----------------|----------------|----------------|----------------|
| Midnight Black | Midnight Black | Midnight Black | Midnight Black |
|----------------|----------------|----------------|----------------|

FEET

| | | | |
|-------------|-------------|-------------|-------------|
| Rubber pads | Rubber pads | Rubber pads | Rubber pads |
|-------------|-------------|-------------|-------------|

BINDING POSTS

| | | | |
|---|---|---|---|
| Single nickle-plated 5-way binding posts | Single nickle-plated 5-way binding posts | Single nickel-plated 5-way binding posts | Single nickel-plated 5-way binding posts |
|---|---|---|---|

ACCESSORIES

| | | | | |
|----------------------------------|----|-----|-----|-----|
| DESIGNED FOR R900 HEIGHT SPEAKER | No | Yes | N/A | N/A |
|----------------------------------|----|-----|-----|-----|

polk[®]

EXPECT GREAT SOUND[®]